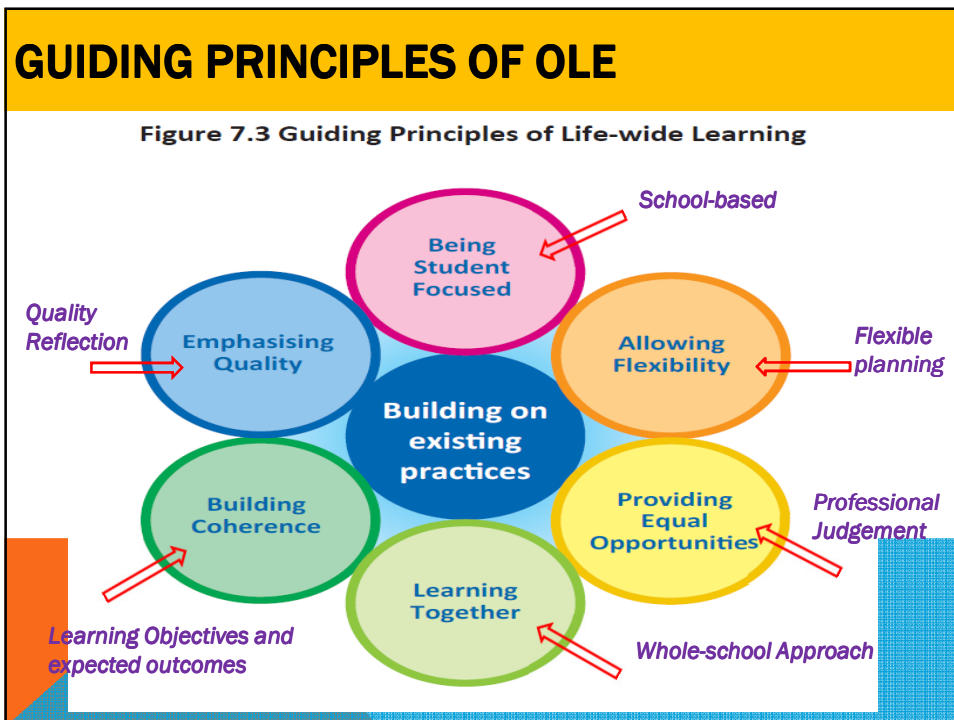
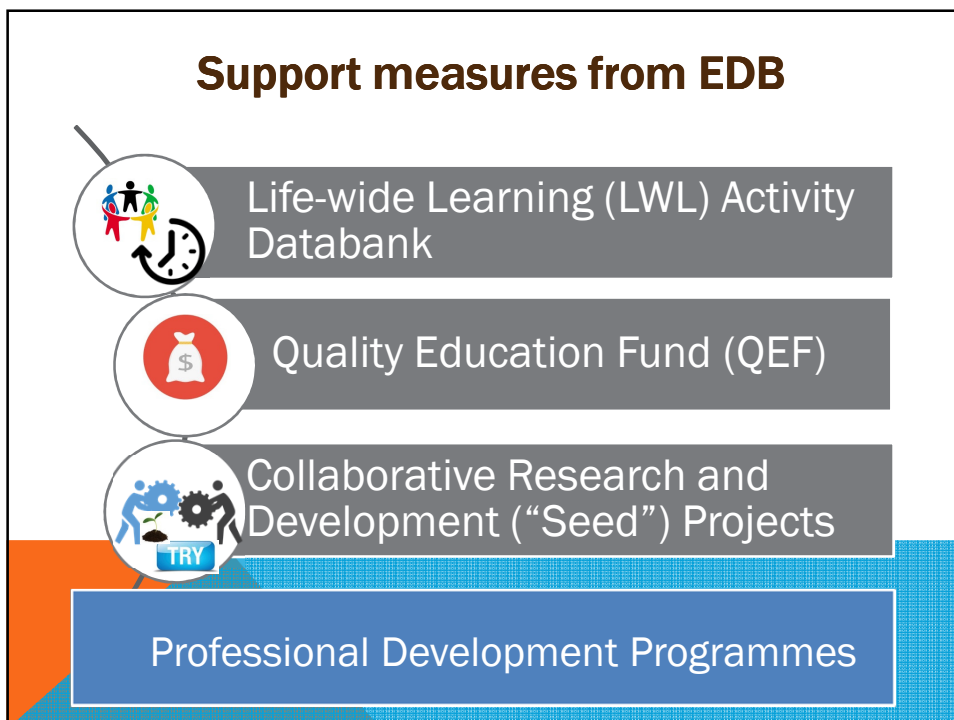
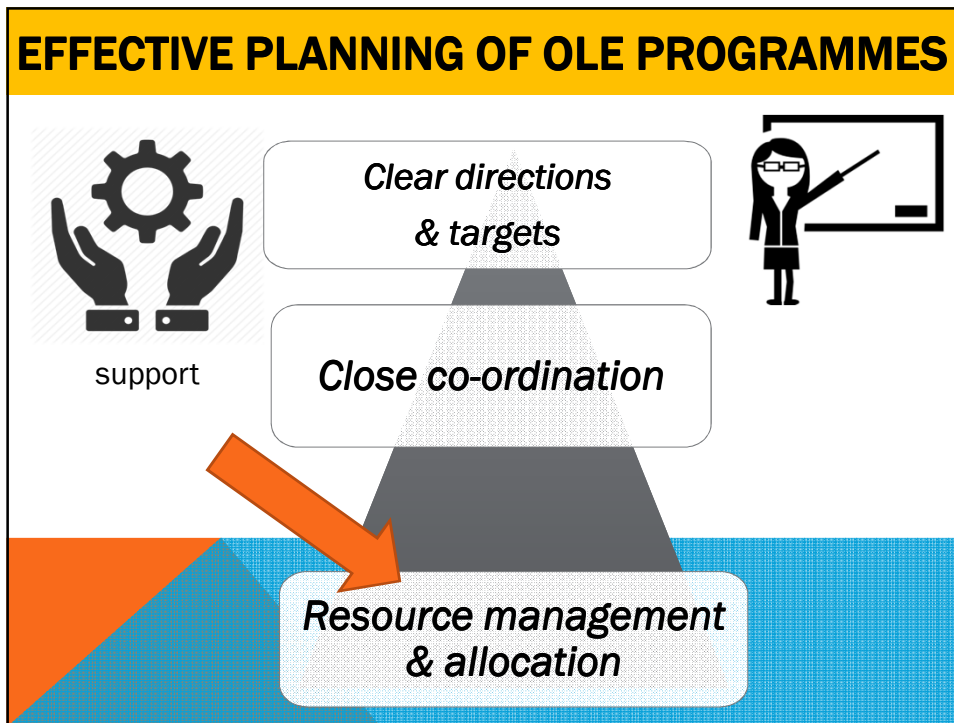


Effective Planning of OLE Programme





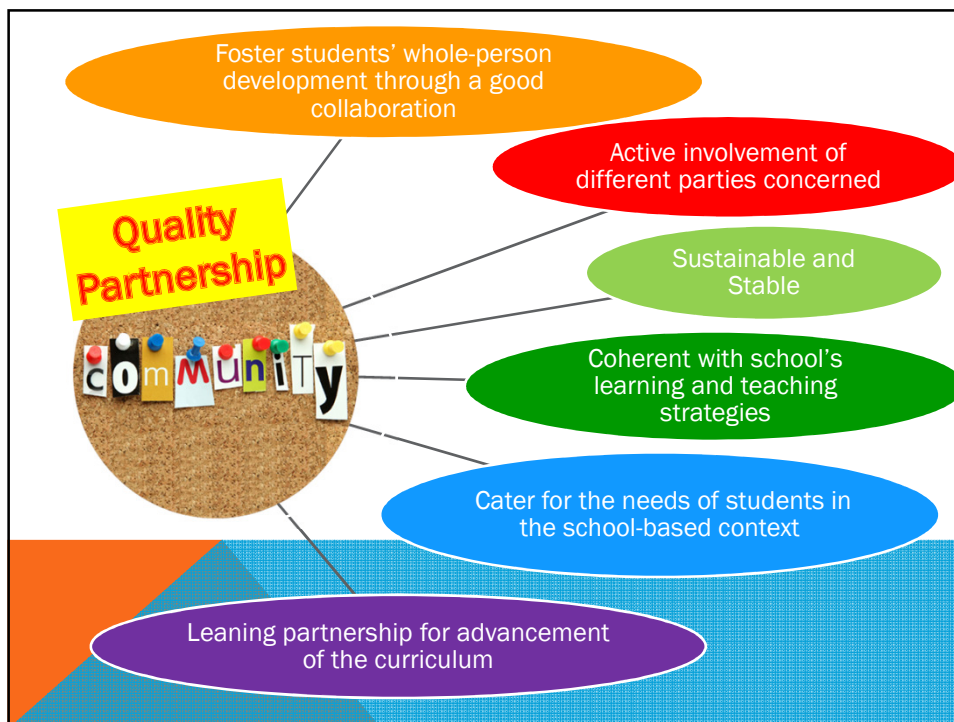


Steps to ensure our OLE programmes are of quality:

- Planning should be **Thoughtful**
- Implementation should be **Feasible**
- Evaluation should be **Meaningful**

Effective Planning of OLE Programme

QUALITY PARTNERSHIP



Our Partners' OLE programmes are usually :

- Thoughtful
- Feasible
- Meaningful

However, we have to do

- ensure they have Evaluate and Reflect on the programmes before continuing / starting a NEW one.

