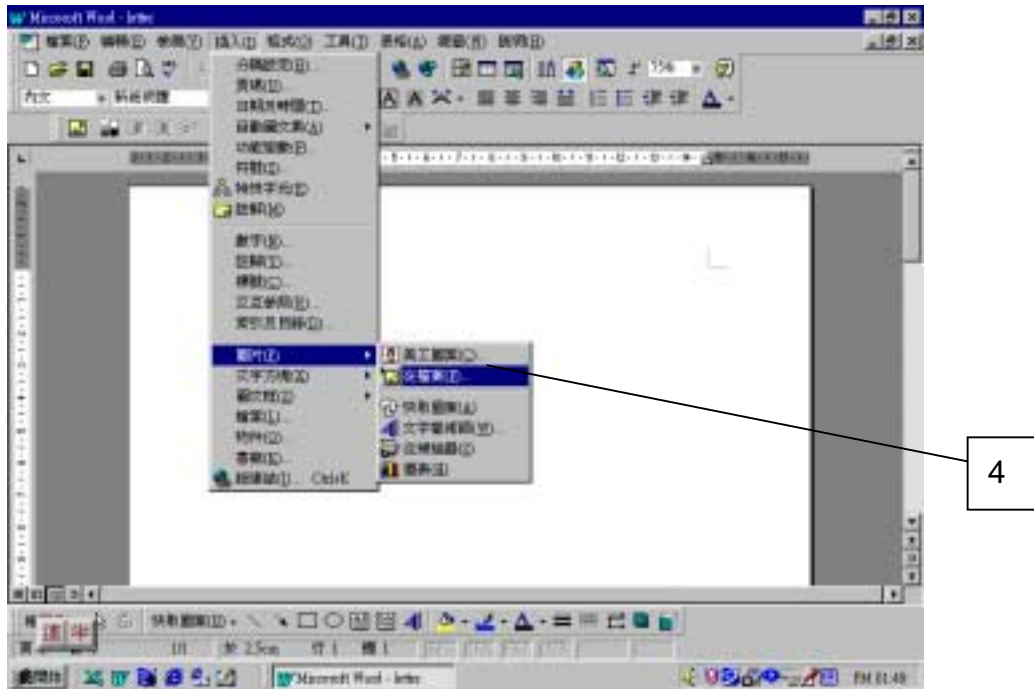
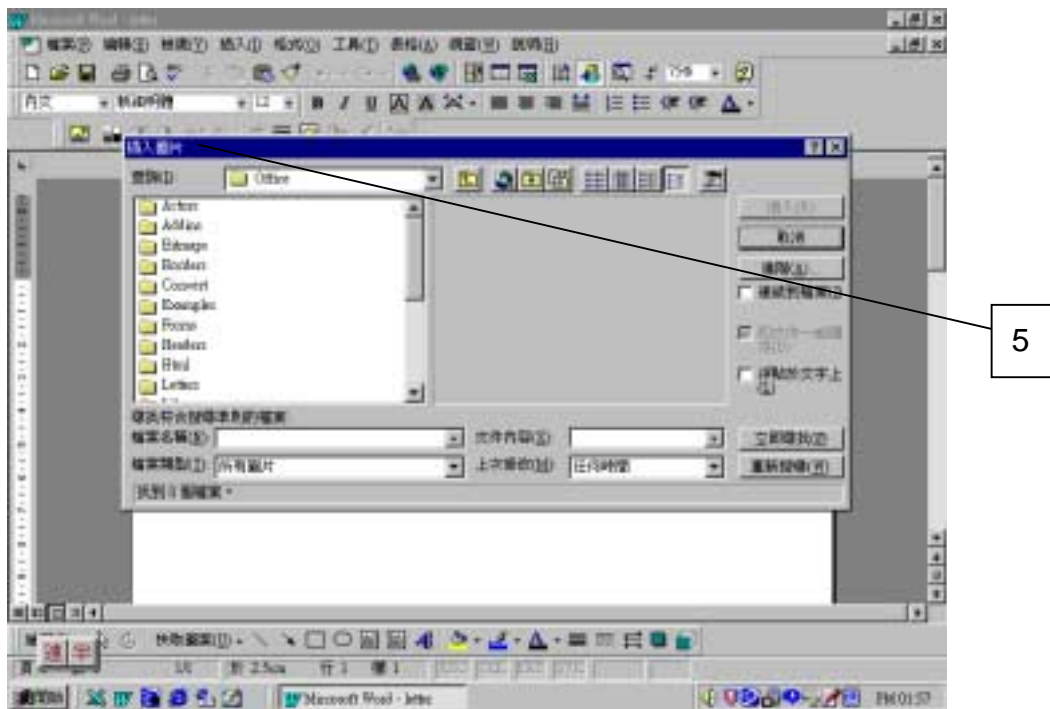




4. 在右面的工具列清單中凸顯並選「從檔案」

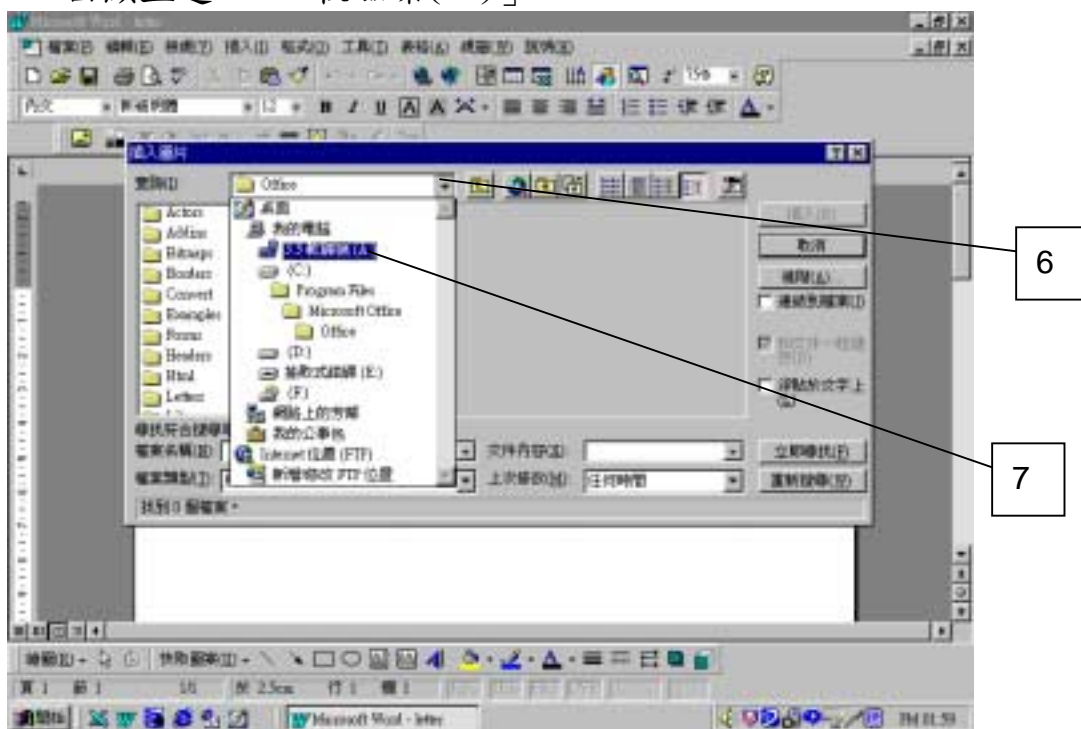


5. 屏幕會出現一「插入圖片」對話方塊



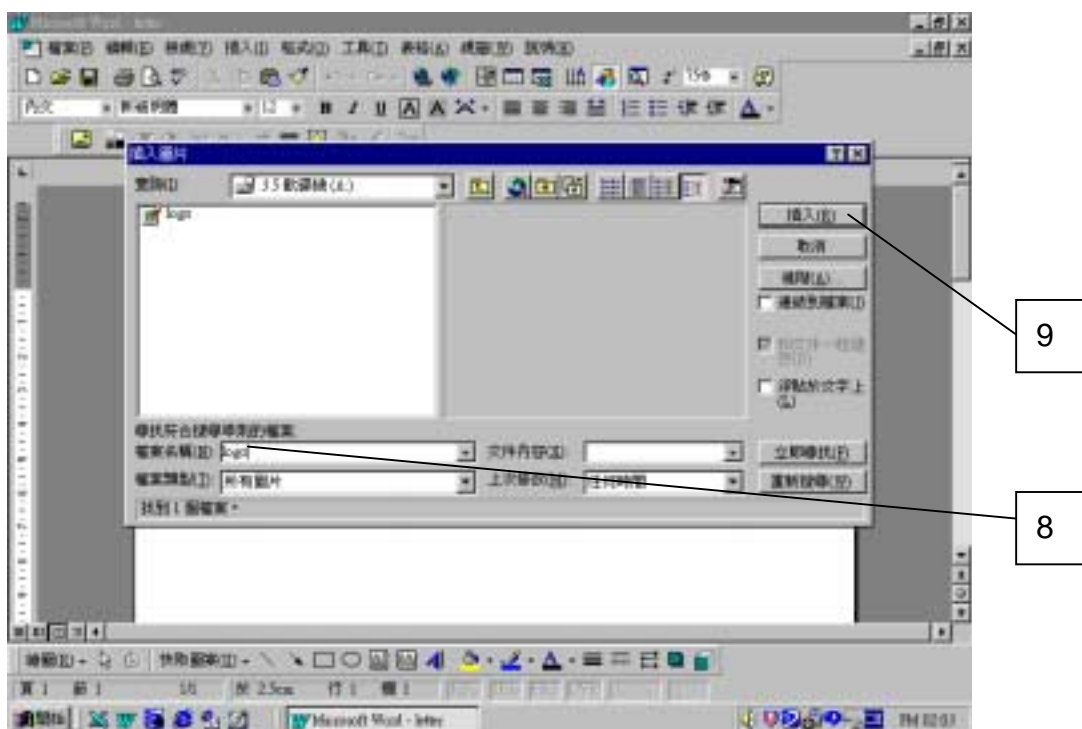
6. 按組合方塊

7. 凸顯並選「3.5 軟磁碟(A:)」



8. 鍵入檔案名稱(如 logo)

9. 按「插入」



10. 圖片便會插入 Word 文件中

