

“Enhance Curriculum Leadership, Promote Curriculum Initiatives” Education Bureau School-based Support Services (SBSS) (2025/26)

Professional support services provided by EDB officers

Primary Level

English Language

Learning Community for Primary English Language Teachers: Integrating Curriculum Initiatives into the Primary English Language Curriculum

#Values Education

#Learning across the Curriculum

#Catering for Learning Diversity

Language Learning Support Section



Online
application code:

L18

About the Support Service



Area of Support

- Building learning communities among English Language teachers

Target of Support

- Curriculum leaders (e.g. English Panel Heads, level coordinators)
- English Language teachers

Objectives of the Support Service

- To enhance curriculum leadership and professional capacity of the teacher team in participating schools through the train-the-trainer approach
- To empower teachers to optimise their school English Language curriculum through integrating various curriculum initiatives into the curriculum
- To provide a platform for teachers to inquire into topics of common interest, both collectively and individually, share school-based experiences and resources, and network with other like-minded professionals

Foci of Support

- To integrate various curriculum initiatives, including the major renewed emphases in the Primary Education Curriculum Guide (PECG) (2024), into the school English Language curriculum (e.g. Reading across the Curriculum (including in the context of supporting STEM/STEAM education), values education (including life education, national education and national security education) and making good use of learning time
- To optimise the school English Language curriculum to cater for students' diverse learning needs, promote self-directed learning and foster students' whole-person development

Support Activities

Online
application code:

L18

Theme-based workshops:

- Thematic talks, sharing and discussion
- Hands-on activities



Inter-school networking activities:

- Inter-school collaborative lesson planning
- Inter-school lesson observation
- Inter-school visits
- Experience sharing

Face-to-face/online meetings:

- 1-2 meetings with language support officers
(e.g. consultation, collaborative lesson planning)

Scan the QR code to learn more about our expectations for participating schools:

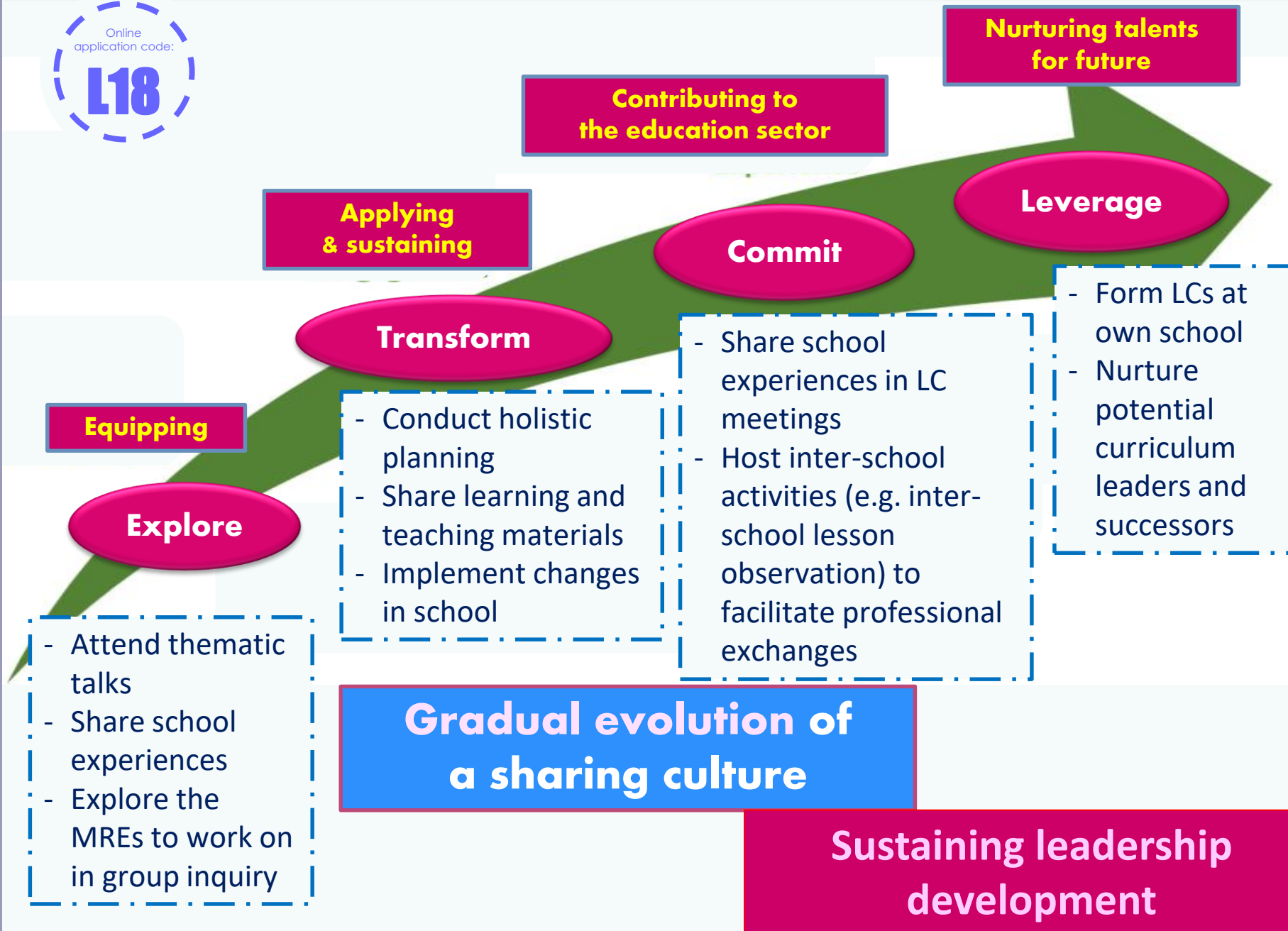


<https://cd1.edb.hkedcity.net/cd/languagesupport/services.html>

Four-Stage Learning Journey for LC Members

Online
application code:

L18



Highlights of the Support Service

Online
application code:

L18

Keeping abreast of a range of curriculum initiatives that **suit the school's and English panel's needs**

To address
the school's major concerns

To set
the English panel's development focuses

Optimising the school English Language curriculum **with reference to the PECG**

- 7 learning goals
- 3 major directions
- 7 major renewed emphases

- 6 overarching implementation strategies (*e.g. organic integration, natural connection*)

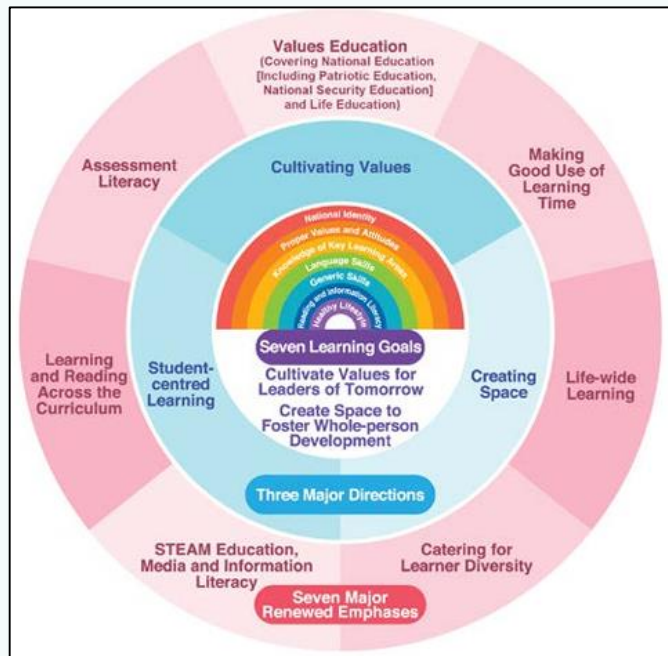


Highlights of the Support Service

Online
application code:

L18

Inquiring collectively and individually into how to **plan and implement different curriculum initiatives including the MREs**



MREs for 2025/26 input sessions

Learning/Reading across the Curriculum
(including in the context of supporting STEM/STEAM education)

Values education
(including life education, national education and national security education)

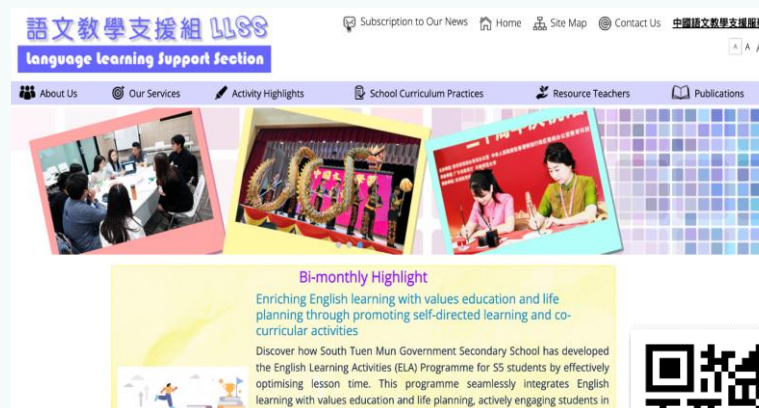
Making good use of learning time

Scan the QR code for an overview of all the support services provided by Language Learning Support Section (LLSS).



<https://cd1.edb.hkedcity.net/cd/languagesupport/services.html>

If you would like to know more about LLSS, please visit our website or contact us.



<http://www.edb.gov.hk/languagesupport/>



**Learning Community for Primary English Language Teachers:
Integrating Curriculum Initiatives into the Primary English Language Curriculum
(Online Application Code: L18)**

**Language Learning Support Section
Education Bureau**

Enquiry Hotline/Email

Contact person: **Ms FUNG Ling, Brenda**

Telephone: **3698 4067**

Email: **brendafung@edb.gov.hk**

Points to Note on Application

- The support service normally lasts for one year.
- Schools may apply for **a maximum of two SBSS**. To promote curriculum initiatives, schools may additionally apply for “recommended services” items, including (i) “Mainland–Hong Kong Teachers Exchange and Collaboration Programme”, (ii) support services for kindergartens/schools admitting NCS children/students, and (iii) “Learning Community for Primary School Master/Mistress (Curriculum Development) [PSM(CD)]: Promoting Curriculum Initiatives and Developing Curriculum Leadership”. Please refer to Education Bureau Circular Memorandum No. 7/2025 or scan the following QR code to browse the SBSS website for details and the latest information of the support programmes.



School-based Support Services
<http://www.edb.gov.hk/sbss>

- Interested schools may apply for **“Learning Community for Primary English Language Teachers: Integrating Curriculum Initiatives into the Primary English Language Curriculum”** (Online Application Code: **L18**) through the Online Application System (OAS) for SBSS via the Common Log-on System (CLO) (<http://clo.edb.gov.hk/>) **from 8 April to 30 April 2025**.

Points to Note on Application

- For enquiries regarding the application:

Enquiry	CLO	OAS for SBSS
Contact section/unit	CLO Helpdesk	School-based Professional Support Section
Contact person	CLO Helpdesk	Mr Sam LAI
Telephone No.	3464 0592	2152 3604

- Results of the allocation will be announced on **13 June 2025**.



- THE END -